

## 1908 OSO AVE



4 BED



3.5 BATH



3410 SF



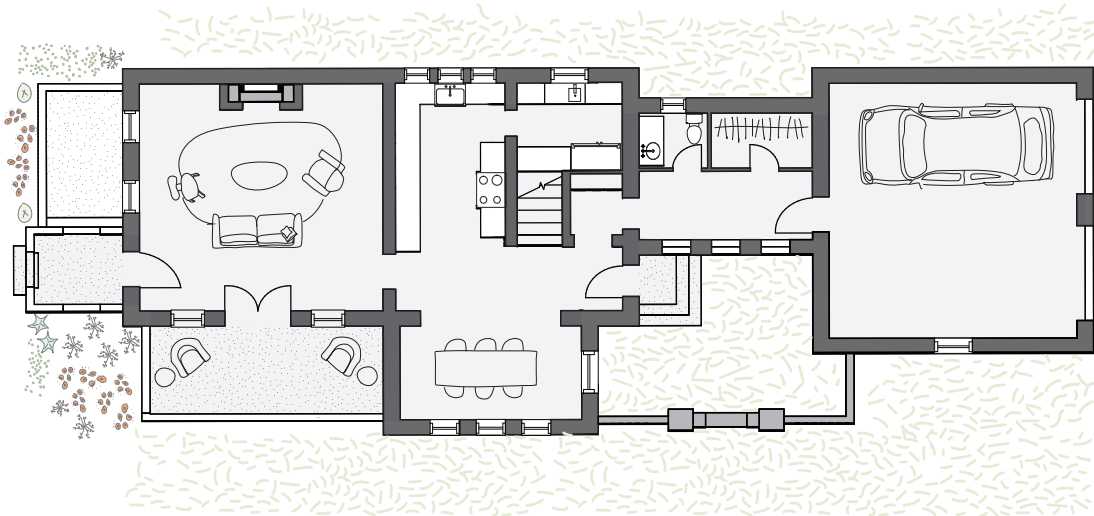
Blending the best of old and new, this home is built to last centuries. Sculpted from over 150,000 bricks in true historic fashion using the practice of structural masonry, coupled with the best modern tech has to offer, it is a true fusion of classical and modern practices. Earthy, cozy and comfortable with exposed brick walls and natural materials throughout. Locally quarried sandstone sills and lintels, brick arches and plaster are brilliantly balanced with refined and sophisticated finishes like aged brass and marble tile. Seamlessly blending indoor-outdoor living with multiple porches off of living areas, such as the screened in porch off the living room through a set of French doors, or the European-style courtyard for evening soirees. The vaulted primary room suite is truly impressive, nesting itself over the garage for maximum privacy in an urban setting, right in the heart of Wheeler District.





**1908 OSO AVE**  
4 BED – 3.5 BATH – 3410 SF

*First floor:*



*Second floor:*

