

1733 Oso Avenue



3 BED



3.5 BATH



2685 SF

Step inside this stunning park-facing home and be welcomed by the great room adjacent to the kitchen and dining room. Enjoy effortless indoor-outdoor living with sliding glass doors leading to the cozy covered patio. Ascend to the second floor and find the primary suite with a sizable en suite, study, and utility room, while the secondary bedroom also has an en suite bathroom. On the third floor, you'll find a secluded living space, an additional bedroom, and a full bathroom, providing the perfect retreat for guests. Live comfortably and efficiently with top-of-the-line features like Pella windows, geothermal heating and cooling, and solar power in the heart of Wheeler District.

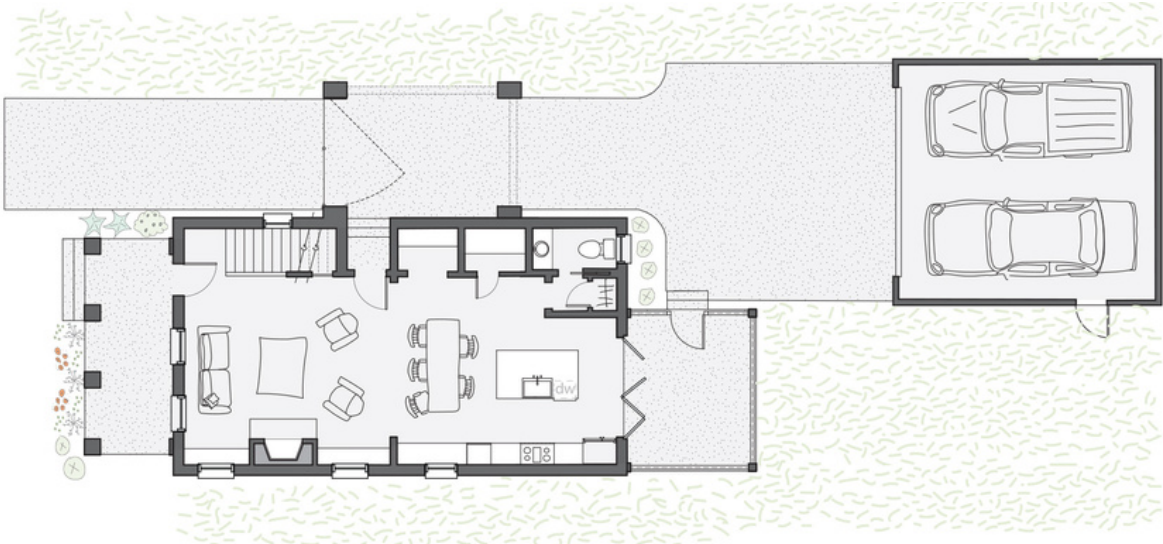


WHEELER *Home*

1733 OSO AVENUE

3 BED | 3.5 BATH | 2685 SF

First floor:



Second floor:



Third floor:

