

1901 OSO AVE




3 BED


2.5 BATH


1497 SF

Offering all the efficiencies of a traditional Wheeler cottage, this plan features a few additional favorite amenities, such as an expansive wrap-around front porch, elevated square footage, and an attached garage. Floor one hosts the open living space, kitchen, powder bath, and study. The second floor presents the primary suite, two secondary bedrooms, and a full bath.

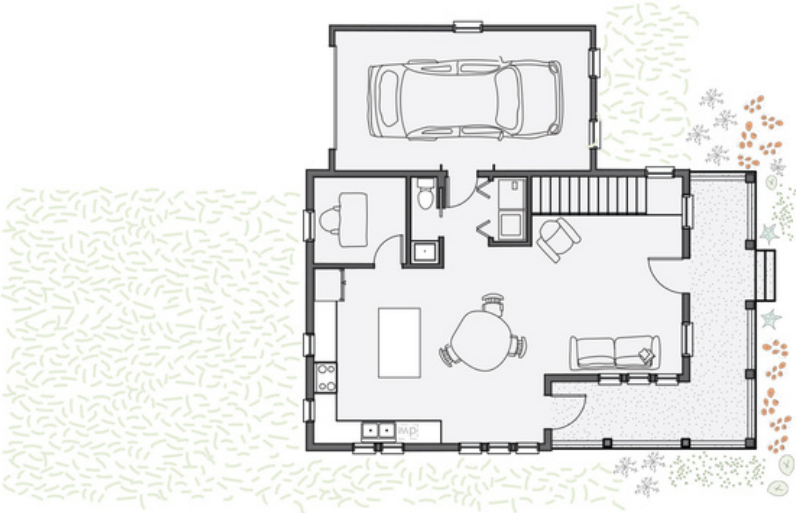


WHEELER Home

1901 OSO AVE

 3 BED	 2.5 BATH	 1497 SF
--	---	---

First floor:



Second floor:

