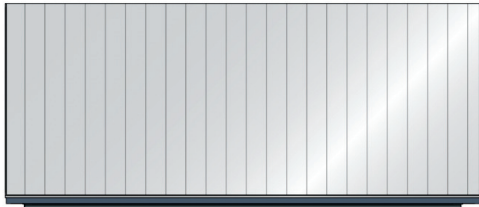


WHEELER *Home*

1042 HANGAR DR



3 BED



2.5 BATH



1717 SF



\$535,000

This home combines both daily comfort and community living. The main level features a great room-style living area, dining space, and kitchen with plenty of natural light, creating a warm and inviting setting. Upstairs includes a primary suite, en suite bath, walk-in closet, two secondary bedrooms, full hall bath, and a utility room. Outside, a covered porch offers a perfect spot for relaxation, while the shared courtyard space enhances the sense of community. With direct access to a two-car garage and nearby amenities, this home is contemporary living at its best.



All marketing materials are provided for informational and inspiration purposes only. Prices and fees subject to change.

1042 HANGAR DR



3 BED



2.5 BATH

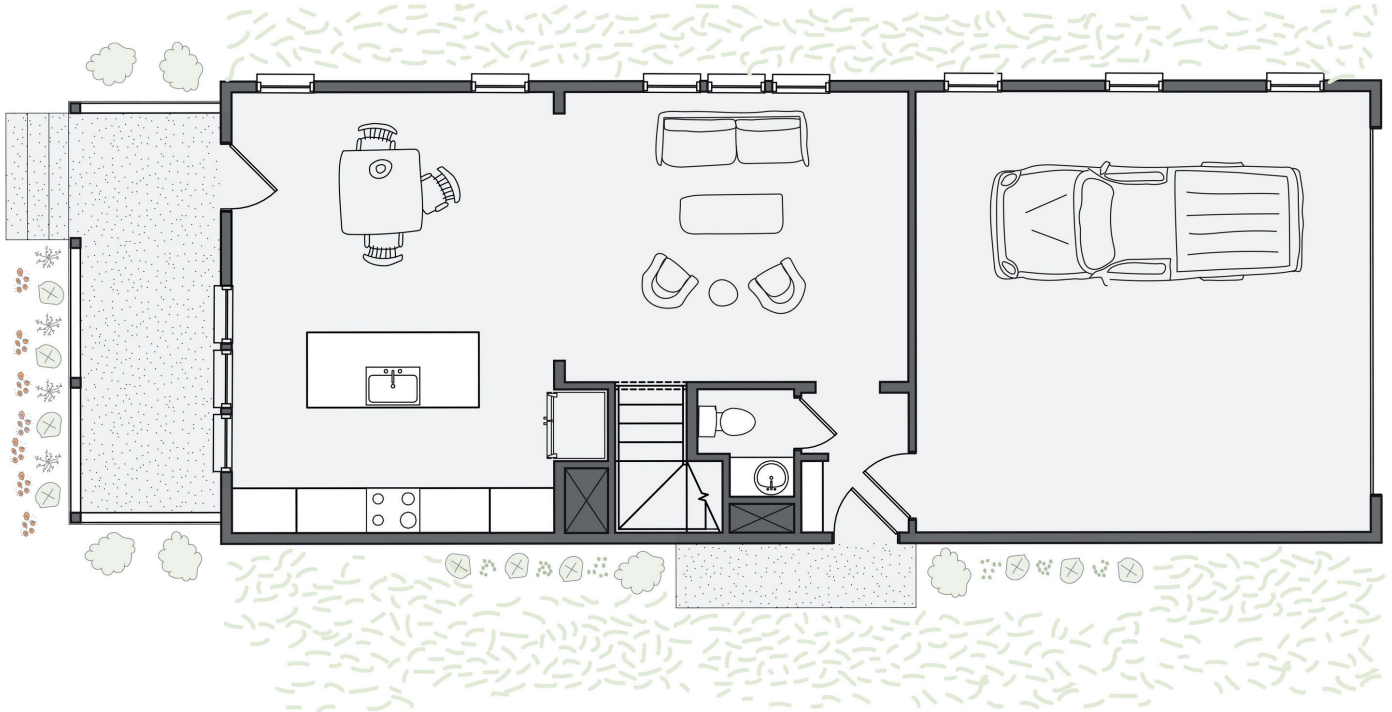


1717 SF



\$535,000

First floor:



Second floor:

