

WHEELER *Home*

936 HANGAR DR



3 BED



3 BATH



1830 SF



\$565,000

Boldly designed with inspiration drawn from Scandinavian row homes, this towering residence stands nearly 40 feet tall, showcasing a unique blend of functionality and style. The ground floor features a versatile flex space/bedroom along with a convenient tuck-under two-car garage, ensuring seamless parking and ample storage. The second story hosts a kitchen with an island, dining area, and living room. Enhancing the space, a 180 square-foot covered terrace and sliding glass wall redefine the seamless transition between indoor and outdoor living. The third floor host two bedrooms, including the primary suite adorned with tall vaulted ceilings and expansive windows that offer captivating views of the shared courtyard, the district, and the bustling skyline of downtown OKC.



All marketing materials are provided for informational and inspiration purposes only. Prices and fees subject to change.

936 HANGAR DR



3 BED



3 BATH

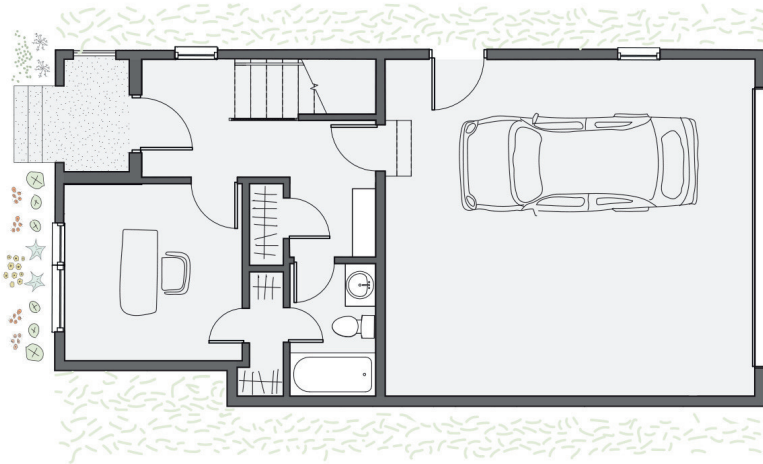


1830 SF



\$565,000

First floor:



Second floor:



Third floor:

