

WHEELER *Home*

1070 HANGAR DR



2 BED



1.5 BATH



906 SF



\$310,000

Encouraging community living, this Wheeler cottage faces a shared courtyard, creating a blend of comfort and connectivity. The ground floor features a living room, kitchen, walk-in pantry, and powder bathroom. Upstairs, two bedrooms complete this cozy cottage, one having private access to a shared bathroom. Additionally, this home enjoys the benefit of an inviting front porch, a private backyard, and covered parking. Expect lower utility costs with top-of-the-line features including Pella windows and geothermal heating and cooling.



All marketing materials are provided for informational and inspiration purposes only. Prices and fees subject to change.

1070 HANGAR DR



2 BED



1.5 BATH

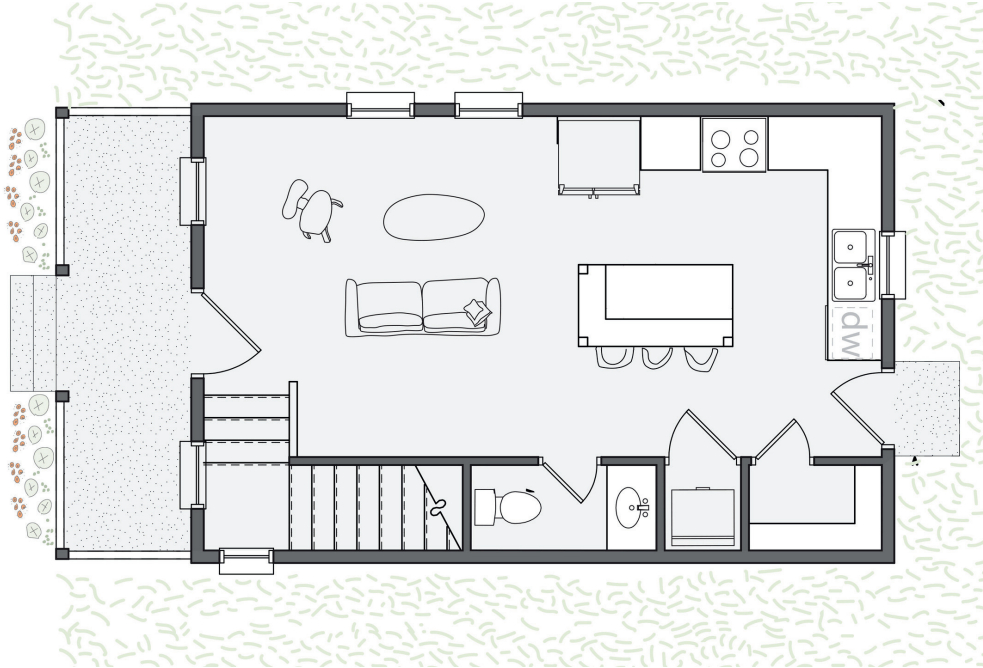


906 SF



\$310,000

First floor:



Second floor:

