

# WHEELER *Home*



## SOLO II


1624 S DOUGLAS AVE.

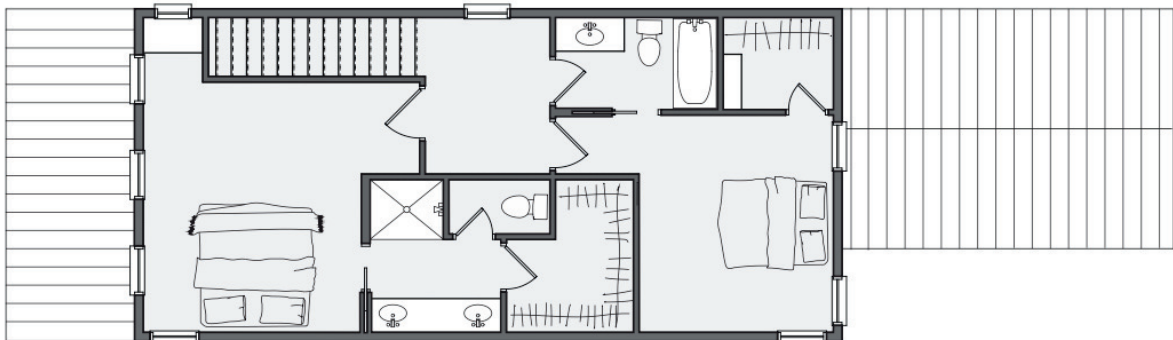
 2 BED

 2.5 BATH

 1332 SF

 1-CAR GARAGE

 \$425,000



# WHEELER *Home*

**1624 S DOUGLAS AVE.**



**2 BED**



**2.5 BATH**



**1332 SF**



**\$425,000**

This home is built with all the best features of the Wheeler Home 'Solo' plan compiled into a compact and courteous two-story New Solo. Off of a roomy front porch, the ground floor features kitchen, living, and dining spaces with direct access to a covered patio and oversized one-car garage. The first floor also includes a functional mudroom, utility and a powder bath. The second floor hosts two bedrooms and two full bathrooms - one privately off of the larger room creating a primary suite oasis. Ideally located just steps from the neighborhood park, pool, retail, restaurants, and coffee shop, this home offers the best of life in the vibrant Wheeler District



All marketing materials are provided for informational and inspiration purposes only. Prices and fees subject to change.