

WHEELER *Home*

1636 PIONEER ST



3 BED



2.5 BATH



2103 SF



\$685,000

Ideally situated on a desirable corner lot, this Wheeler Home offers the perfect blend of comfort, style, and functionality. Filled with natural light streaming through beautiful French windows, the living area is anchored by a cozy fireplace, creating a warm and welcoming atmosphere for gatherings. Just off the dining room, elegant French doors open to a private backyard, ideal for entertaining or enjoying quiet evenings outdoors. Thoughtfully designed with Wheeler's signature quality and attention to detail, this home is perfectly positioned to enjoy all the charm and convenience of Wheeler District living.



All marketing materials are provided for informational and inspiration purposes only. Prices and fees subject to change.

1636 PIONEER ST



3 BED



2.5 BATH

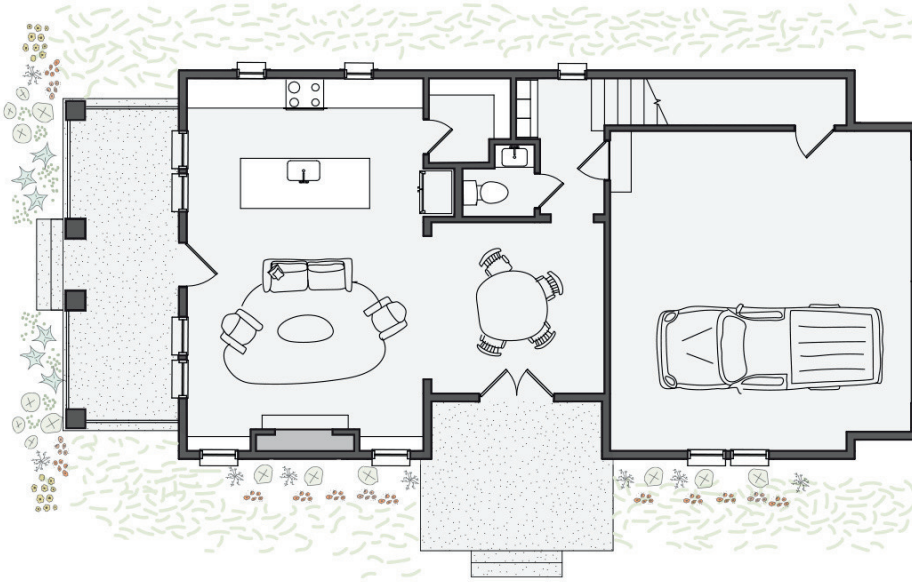


2103 SF



\$685,000

First floor:



Second floor:

