

SPOKE STREET SHOPHOMES

1612 SPOKE ST.

\$545,000

All marketing materials are provided for informational purposes only. Prices and design subject to change.

First Floor	612 SF
Second Floor	618 SF
Third Floor	615 SF
Work Area	539 SF
Living Area	1,306 SF
Total Area	1,845 SF

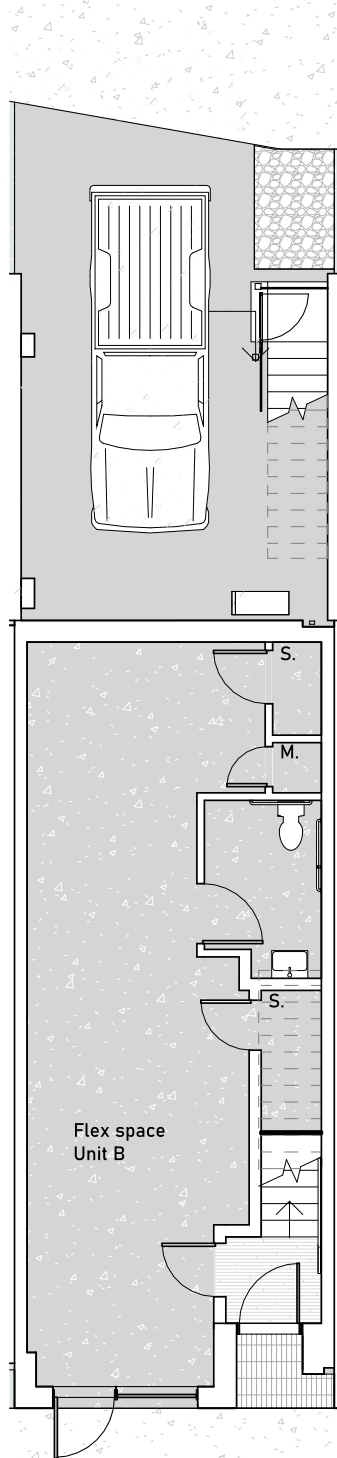
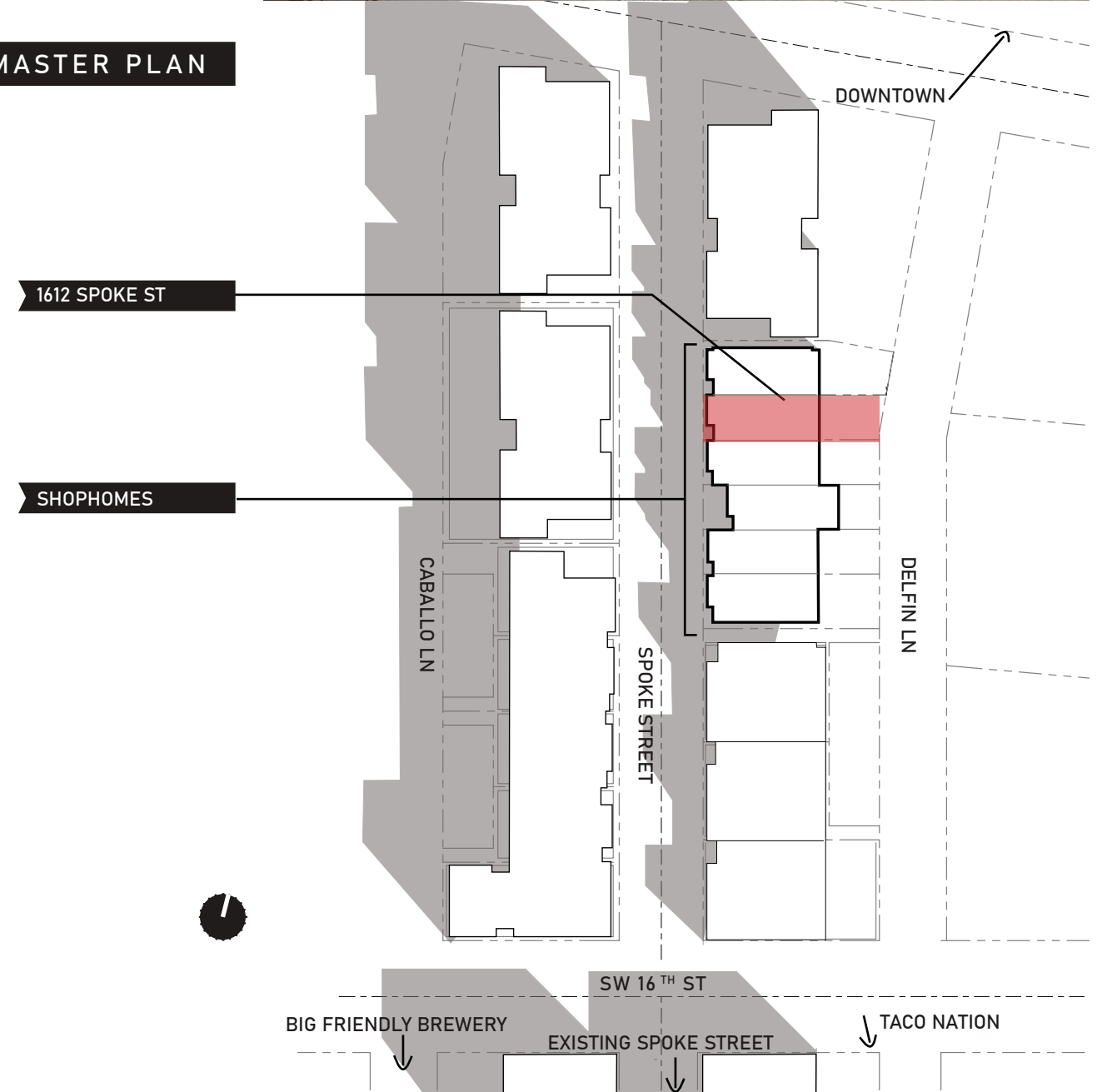


1612 SPOKE ST

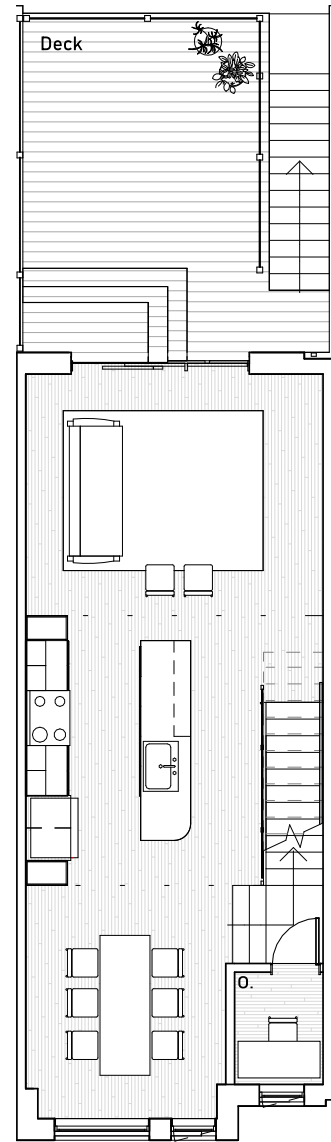
A small second floor office off the stair landing provides additional storage and natural light through its glass door.



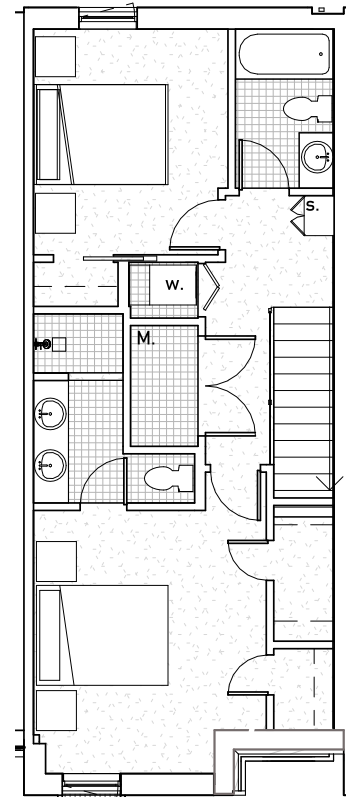
SPOKE MASTER PLAN



FLOOR 1



FLOOR 2



FLOOR 3