

WHEELER *Home*

# SOLO SERIES

*Everything you love about a Wheeler Home—just in a taller package.*



1636 S Douglas Ave.  
\$475,000



1640 S Douglas Ave.



1644 S Douglas Ave.  
\$485,000



All marketing materials are provided for informational and inspiration purposes only. Prices and fees subject to change.

# WHEELER *Home*



3 BED



2.5 BATH

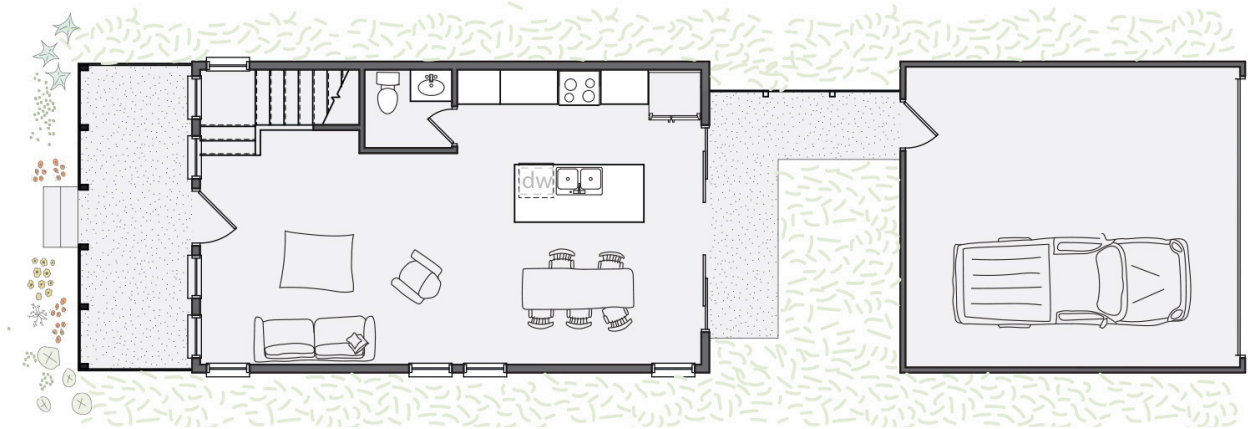


1583 SF

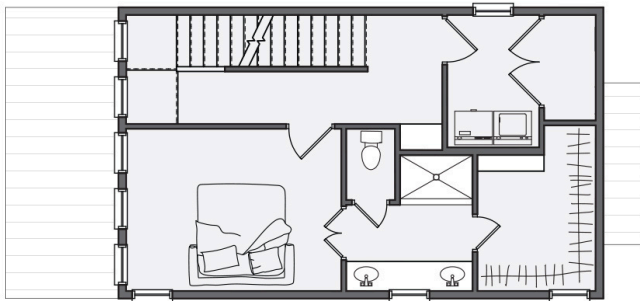


2-CAR

First Floor



Second Floor



Third Floor

